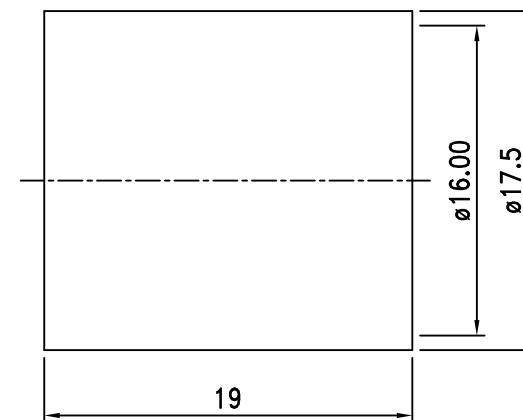
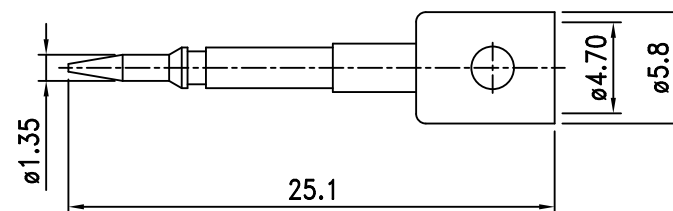
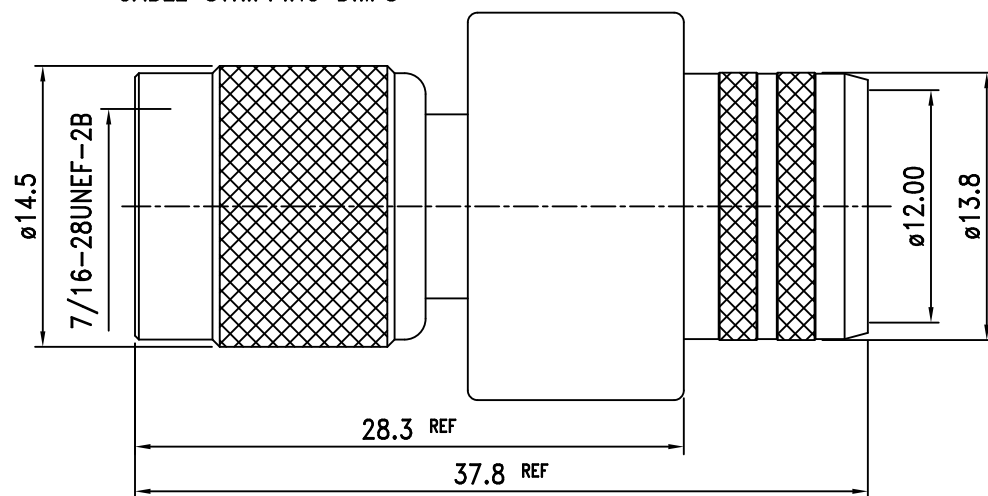






IMPEDANCE: 50 OHMS  
FREQUENCY RANGE: 0-4 Ghz  
WORKING VOLTAGE: 500 Vrms Max. @ Sea Level  
DIELECTRIC WITHSTANDING VOLTAGE: 1500 Vrms Max.  
VSWR: 1.3 Max.  
INSULATION RESISTANCE: 5000 MOhms Min.

SOLDER OR CRIMP RECOMMENDED DIE 0.186 OR 4.72mm  
TCC CRIMP TOOL: 31-CT-L6R



RECOMMENDED CRIMP DIE 0.61"/15.50mm  
TCC CRIMP TOOL: 31-CT-L6R

TOLERANCE		UNITS		DRAWN BY:	CHECKED BY:	APPROVED BY:	CAD FILE	 <b>TCC INDUSTRIES INC.</b> 7050 Village Drive unit E, Buena Park, CA 90621-2282 Tel. 714.523.8885 - FAX. 714.562.0888 E-Mail: info@tcinc.com Website: www.tcinc.com
.X	+/- 0.2	mm					15-10L6-TGN	
.XX	+/- 0.1	SCALE	SIZE	PROPRIETARY AND CONFIDENTIAL			DESCRIPTION	
.XXX	+/- 0.05	NTS	A	THE INFORMATION IN THIS DRAWING IS THE SOLE PROPERTY OF TCC INDUSTRIES, INC. ANY REPRODUCTION IN PART OR AS A WHOLE WITHOUT THE WRITTEN PERMISSION OF TCC INDUSTRIES, INC. IS PROHIBITED.				
ANGLE	+/- 0.5	SHEET	1 OF 1				TNC MALE CRIMP FOR TCC CABLE GROUP "L6"	